

# WORKSHOP LIGHT

CATALOG NO.	LAMPS	BALLAST	POWER FACTOR	LENGTH	WIDTH	DEPTH	PCS/CTN	UNIT WT.
224 S-TS	2-20W	Trigger	Low	24	12-1/2	5-7/16	1	10
236 S RS	2-30W	Rapid	High	36	12-1/2	5-7/16	1	16
248 S RS	2-34W	Rapid	High	48	12-1/2	5-7/16	1	17

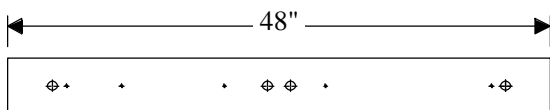
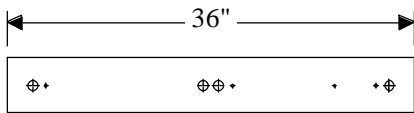
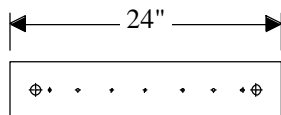
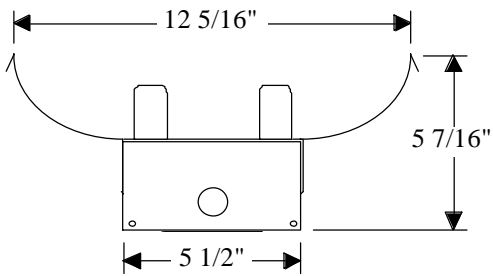
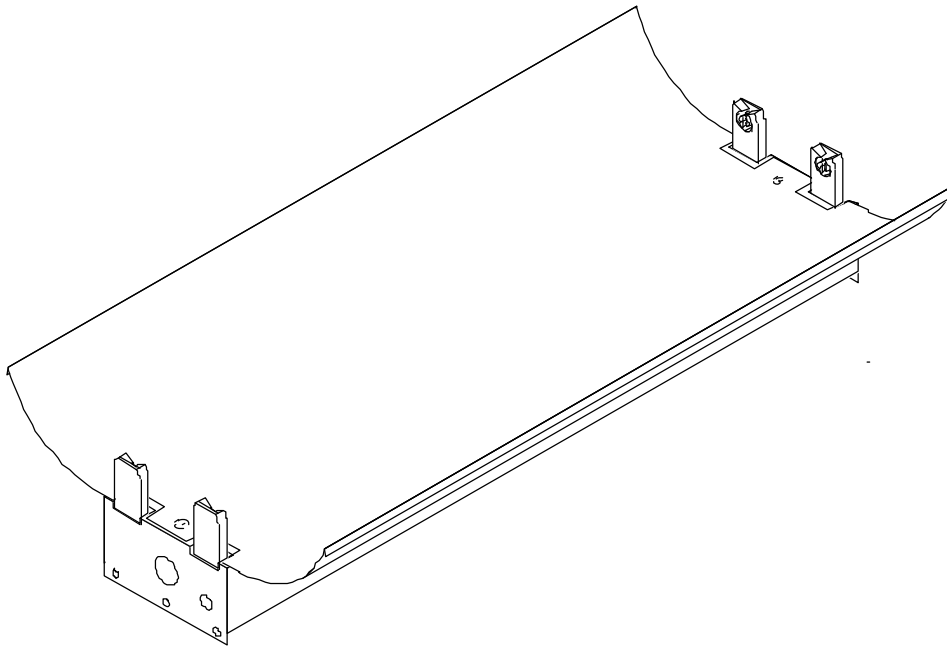
- ⌀ Housing, ends, and reflector are die-formed steel, finished with baked white polyester powder coating.
- ⌀ Solid-top, one-piece reflector standard.
- ⌀ Uplight available with optional aperture reflector.
- ⌀ Surface, pendant, or chain mounting, individual or continuous row installation.
- ⌀ Reflector removes without the use of tools.
- ⌀ For aperture reflectors for industrial fixtures, add suffix--APP.



H Lighting Company, Inc. • St. Louis, Missouri • 314/773-1176 • FAX 314/773-2890

All H & H Lighting Fixtures are completely wired for 118 volts 60 cycle A.C. operation. Ready for installation. All fixtures bear the I.B.E.W., A. F. of L. and Underwriters Laboratories, Inc. labels.

# WORKSHOP LIGHTS



**MOUNTING** - Complete with knockouts for surface mounting or pendant mounting, individually or in continuous rows. Pendant mounting accessories available on specification. Conduit knockouts are supplied on ends and back.

**ELECTRICAL** - Furnished standard with UL listed ballasts, for 120 Volt 60 Hz A.C. operation. Other voltages and accessories available. Fixtures bear the I.B.E.W., A.F. of L., and Underwriters' Laboratories, Inc. labels.

**APPLICATION** - All industrial fixtures are designed for quick, easy installation either, hanging or flush, individually or continuous rows.

**CONSTRUCTION** - Wireway and ends die-formed of code gauge steel, finished in automatic bonderizing, rust preventative process, with high reflectivity powder coated baked white enamel. Reflector is removable for easy access to electrical components.