

SPECIAL PURPOSE SLIMLINE CHANNEL

| CATALOG NO. | LAMPS | BALLAST | POWER FACTOR | LENGTH | WIDTH | DEPTH | PCS/CTN | UNIT WT. |
|-------------|-------|---------|--------------|--------|-------|-------|---------|----------|
| 4148 SL | 1-38W | 430 mA | High | 48 | 3-3/4 | 4-5/8 | 2 | 13 |
| 4248 SL | 2-38W | 430 mA | High | 48 | 4-3/4 | 5 | 2 | 14 |
| 4172 SL | 1-55W | 430 mA | High | 72 | 3-3/4 | 4-5/8 | 2 | 18 |
| 4272 SL | 2-55W | 430 mA | High | 72 | 4-3/4 | 5 | 2 | 19 |
| 4196 SL | 1-75W | 430 mA | High | 96 | 3-3/4 | 4-5/8 | 2 | 18 |
| 4296 SL | 2-60W | 430 mA | High | 96 | 4-3/4 | 5 | 2 | 21 |
| 4496 SL | 4-60W | 430 mA | High | 96 | 8-1/4 | 4-1/4 | 1 | 47 |

TANDEM SLIMLINE CHANNEL

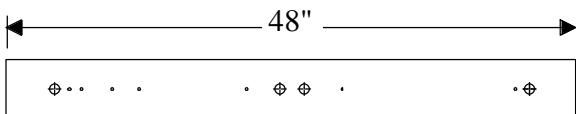
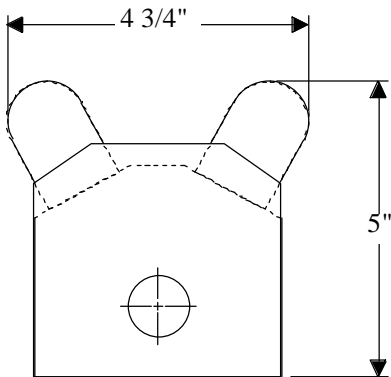
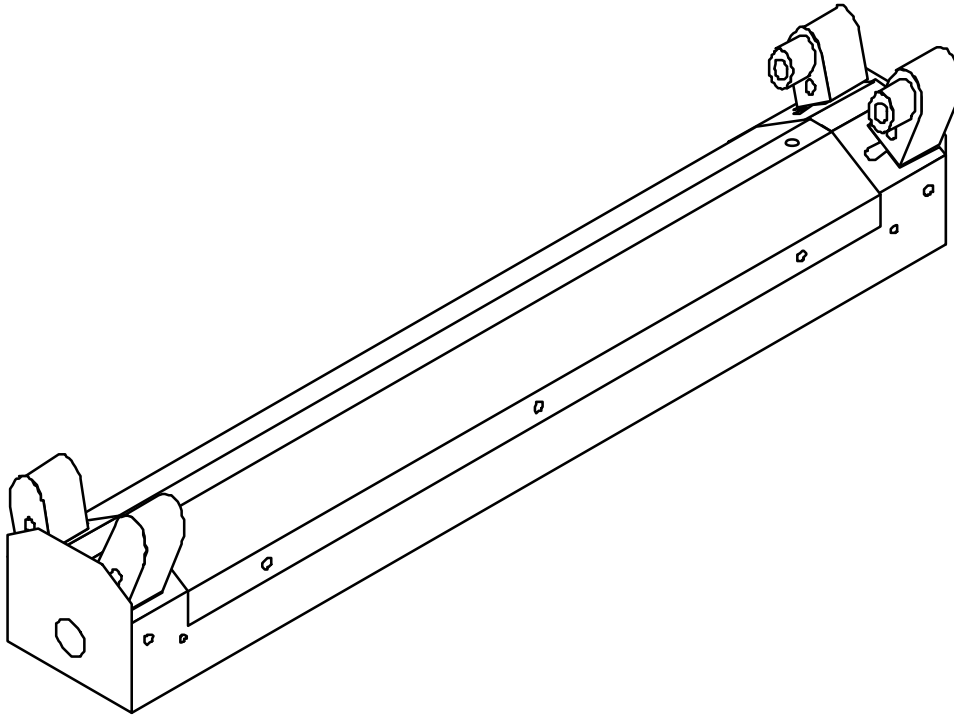
| | | | | | | | | |
|-----------|-------|--------|------|-----|-------|-------|---|----|
| 4196-2 SL | 2-60W | 430 mA | High | 192 | 4-5/8 | 3-5/8 | 1 | 32 |
|-----------|-------|--------|------|-----|-------|-------|---|----|

- ⊕ Housing and ends are die-formed steel, finished with baked white polyester powder coating.
- ⊕ High Output (HO) and Very High Output (VHO) models available.
- ⊕ Optional reflectors available.
- ⊕ V- shaped for special applications.

All H & H Lighting Fixtures are completely wired for 118 volts 60 cycle A.C. operation. Ready for installation. All fixtures bear the I.B.E.W., A. F. of L. and Underwriters Laboratories, Inc. labels.



4200 SL SERIES



MOUNTING - Complete with knockouts for surface mounting or pendant mounting, individually or in continuous rows. Pendant mounting accessories available on specification. Conduit knockouts are supplied on ends and back.

ELECTRICAL - Furnished standard with UL listed ballasts, for 120 Volt 60 Hz A.C. operation. Other voltages and accessories available. Fixtures bear the I.B.E.W., A.F. of L., and Underwriters' Laboratories, Inc. labels.

APPLICATION - All industrial fixtures are designed for quick, easy installation, either hanging or flush, individually or in continuous rows. Heavy duty construction for high vibration areas.

CONSTRUCTION - Wireway and ends die-formed of code gauge steel, finished in automatic bonderizing, rust preventative process, with high reflectivity powder coated baked white enamel. Reflector is removable for easy access to electrical components.