

# MINIATURE STRIP

CATALOG NO.	LAMPS	BALLAST	POWER FACTOR	LENGTH	WIDTH	DEPTH	PCS/CTN	UNIT WT.
M4	1-4W	Preheat	Low	9	1-3/8	2	6	2
M6	1-6W	Preheat	Low	12	1-3/8	2	6	2
M8	1-8W	Preheat	Low	15	1-3/8	2	6	2
M15	1-15W	Preheat	Low	21	1-3/8	2-9/16	6	3
M15-2	2-15W	Preheat	Low	40-5/8	1-3/8	2-9/16	6	7

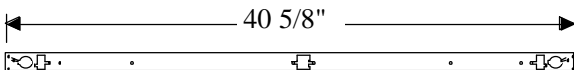
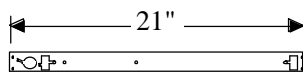
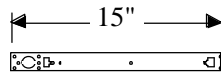
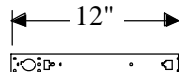
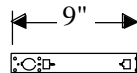
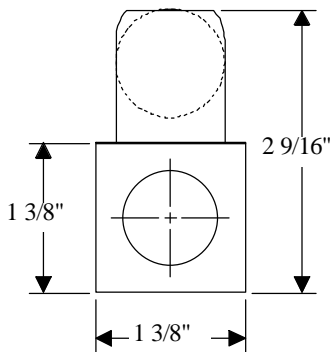
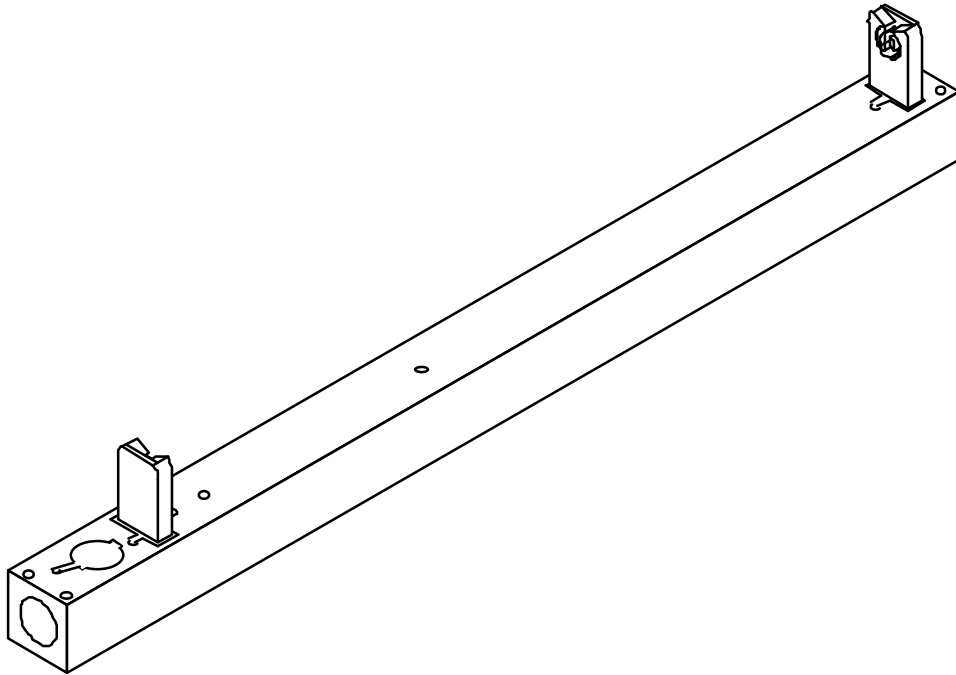
- ⓓ Housing and ends are die-formed steel, finished with baked white polyester powder coating.
- ⓓ Shallow 1-3/8" depth is ideal anywhere that space is a problem.
- ⓓ Preheat lamp application.
- ⓓ Individual or row installation.



H Lighting Company, Inc. • St. Louis, Missouri • 314/773-1176 • FAX 314/773-2890

All H & H Lighting Fixtures are completely wired for 118 volts 60 cycle A.C. operation. Ready for installation. All fixtures bear the I.B.E.W., A. F. of L. and Underwriters Laboratories labels.

# MINIATURE SERIES



**MOUNTING** - Complete with knockouts for surface mounting or pendant mounting, individually or in continuous rows. Conduit knockouts are supplied on ends.

**ELECTRICAL** - Furnished standard with UL listed ballasts, for 120 Volt 60 Hz A.C. operation. Other voltages and accessories available. Fixtures bear the I.B.E.W., A.F. of L., and Underwriters' Laboratories, Inc. labels.

**APPLICATION** - An ideal low silhouette unit for all limited depth mounting areas with cornices and valances, wall cases, displays, and many under-cabinet locations.

**CONSTRUCTION** - Wireway and ends die-formed of code gauge steel, finished in automatic bonderizing, rust preventative process, with high reflectivity baked white enamel.